

# Extensive line-up of Ø320-400mm CNC Rotary Table to Match your own application.



TJR APP -  
Android



TJR APP -  
iOS



www.tjr.com.tw

## Product Code

**RC** - **320** - **R** - **T**

Code No. of  
Transmission Mechanism Type  
RC : Roller Gear Cam  
HR : Worm & Worm Gear

Diamentor of the  
rotary table face  
plate (mm)

Motor mounting  
location

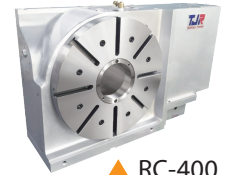
Refer to page2 Table2  
**R** Right Mount **B** Back Mount  
**L** Left Mount **N** Right Mount with sheet metal cover reduction

Transmission Mechanisms  
Material

**T** Taiwan-made  
**J** Japan-made

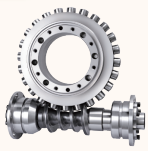


RC-320 ▲

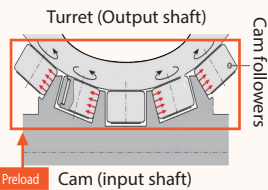


▲ RC-400

### RC Series



Roller Gear Cam

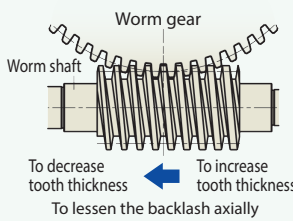


It consists of an input shaft and output turret with embedded roller followers. A cross-roller bearing supports the output turret with minimal run out and transmits power by rolling rather than sliding. Preloaded roller followers contact the input rib surfaces with a wedge-shaped cross section. It can be adjusted by moving the input axis, eliminating backlash completely. Clearly seen for CW and CCW rotation.

### HR Series



Worm & Worm Gear



Specially designed double-lead worm & gear with full-depth teeth. The worm gear with a large pitch diameter creates a large engagement area and less pressure on the contact surface, resulting in higher strength. By moving the worm shaft axially, the tooth engagement can be changed successively. As the backlash between worm and gear can be adjusted while keeping them in their proper positions, the ideal tooth engagement is maintained.

### The sales of different models by major industry sector

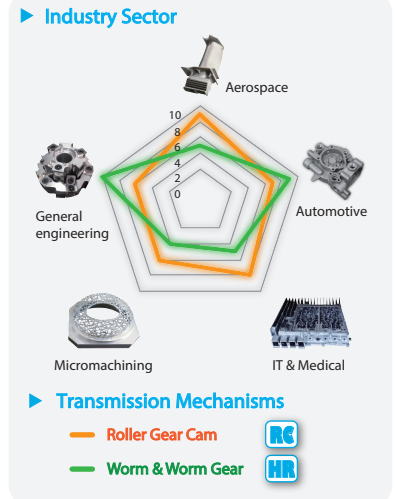


Table 1

Model	Ø320mm	HR-320-T	HR-320-J	RC-320
	Ø400mm	HR-400-T	HR-400-J	RC-400

Transmission Mechanism	Worm & Worm Gear		Roller Gear Cam
Material	<b>T</b> Taiwan Made Worm wheel : Aluminum Bronze	<b>J</b> Japan Made Worm wheel : Special high tensile brass	Turret, Roller Gear Cam, and Follower : <b>Case hardened alloy steel</b>
	Worm shaft : <b>Case hardened alloy steel</b>		The table runs on a series of rollers, meaning slick rolling surface operation with no backlash and wear.
Compact Footprint	—	—	—
Zero Backlash	—	—	★★★★
Anti-Wear	★	★★	★★★★
Maintenance	★	★	★★
Rotary Speed	★	★	★★
Indexing Precision / Repeatability	★★	★★	★★
Loading capacity	★★★	★★★★	★★★★
Driving Torque (without Brake)	★★★	★★★★	★★
Popularity	★★★★	★★★★	★★

# Ø320,400mm Models

## Specifications



Oil brake

Item / Code No.		Unit	HR-320 R/N/B	RC-320 R/L/N	HR-400 R/N/B	RC-400 R/N
Faceplate diameter		mm	Ø320	Ø320	Ø400	Ø400
Inner Diameter of Mandrel Sleeve		mm	Ø120H7	Ø120H7x 35 Deep <sup>*1</sup>	Ø120H7	Ø120H7
Diameter of Center Through Hole		mm	Ø120 Blind hole Ø120 x 217 Deep <sup>*1</sup>	Ø105	Ø120 <sup>*1</sup> Blind hole Ø120 x 220 Deep*1	Ø120
Center Height (Vertical)		mm	210 255 <sup>*1</sup>	210	255	255
Table Height (Horizontal)		mm	235 NA <sup>*1</sup>	235	250 NA <sup>*1</sup>	250
Table T-slot Width		mm	14H7	14H7	14H7	14H7
Guide Block Width		mm	18h7	18h7	18h7	18h7
Min. Increment		deg.	0.001	0.001	0.001	0.001
Indexing Precision		sec.	15	20	15	20
Repeatability		sec.	6	6	6	6
Clamping System (Hydraulic)		kgf/cm <sup>2</sup>	35	35	35	35
Clamping Torque		kgf·m	115	115	200	200
Servo Motor Model	FANUC	Taper shaft	aiF12/βis22	aiF12/βis22	aiF12/βis22	aiF12/βis22
	MITSUBISHI	Taper / Straight shaft	HG-204	HG-204	HG-204	HG-204
	SIEMENS	Straight shaft	1FK7083	1FK7083	1FK7083	1FK7083
	HEIDENHAIN	Straight shaft	QSY-155B	QSY-155B	QSY-155B	QSY-155B
Speed Reduction Ratio		-	1 : 120 1 : 150 <sup>*1</sup>	1 : 30	1 : 120 1 : 150 <sup>*2</sup>	1 : 90
Max. Rotation Rate of Table (Calculate with Fanuc a Motor)		min <sup>-1</sup>	25	33.3	25	33.3
Allowable inertia load capacity (Horizontal)		kg·m <sup>2</sup>	3.1	3.15	6.2	6.25
Allowable Workpiece Load	Vertical	kg	150	150	200	200
	With Tailstock	kg	350	350	500	500
	Horizontal	kg	350 NA <sup>*1</sup>	350	500 NA <sup>*1</sup>	500
Allowable Thrust Load (with Rotary Table Clamping)	F	kgf	3000	3000	4000	4000
	FxL	kgf·m	300	300	400	400
	FxL	kgf·m	115	115	200	200
Driving Torque		kgf·m	80	107	170	140
Net Weight (Servo motor excluded)		kg	204 NA <sup>*2</sup>	187	286 281 <sup>*2</sup>	308
Optional Rotary Joint		Available Number of Ports	2,4,6,8,12	2,4,6,8,12	2,4,6,8,12	2,4,6,8,12

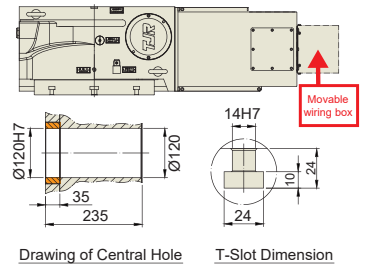
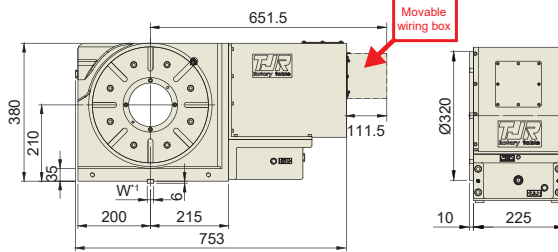
\*1: HR-400A is another option that incorporates a Ø150mm center through hole.  
\*2: When the motor mount location is BACK.

Table 2

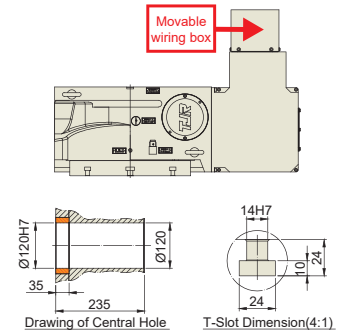
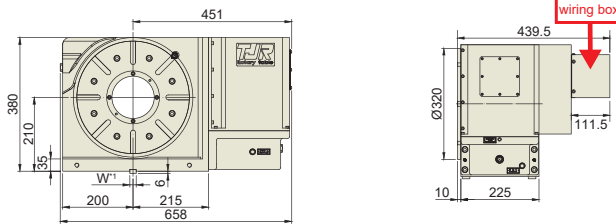
Positioning / Code	Right Mount	Left Mount	Right Mount with sheet metal cover reduction	Back Mount
Diagram				
<b>VERTICAL</b>	✓	✓	✓	✓
<b>HORIZONTAL</b>	✓	✓	✗	✗

# Ø320mm Model Dimensions

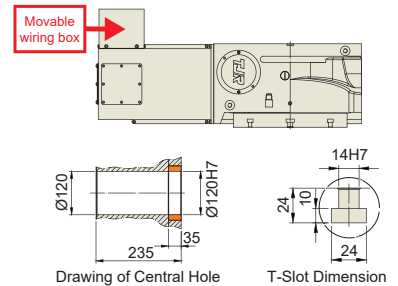
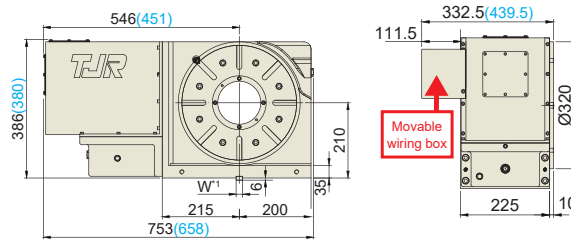
RC-320



RC-320

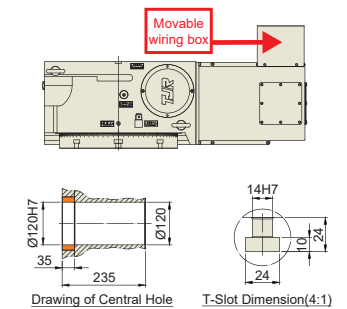
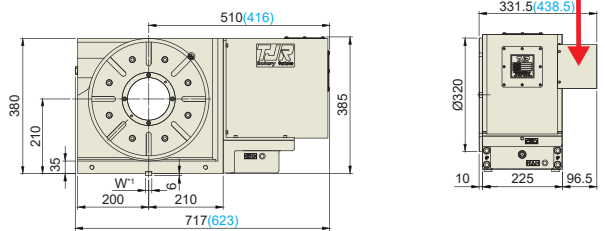


RC-320



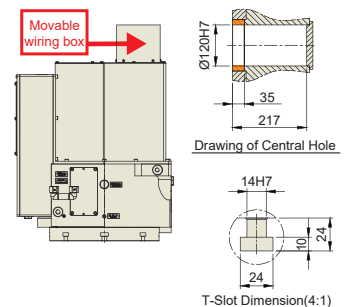
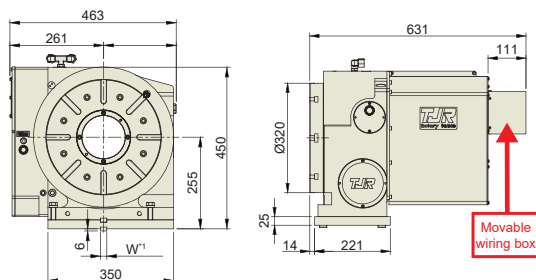
(N): When the sheet metal cover is reduced.

HR-320



(N): When the sheet metal cover is reduced.

HR-320



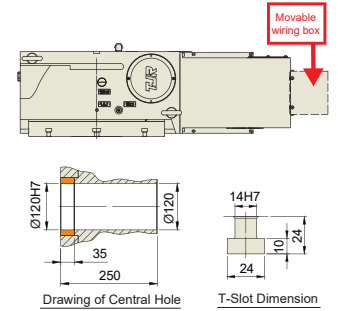
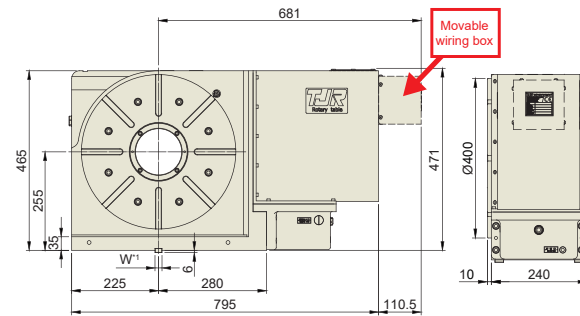
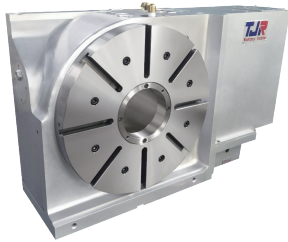
\*1: The Guide Key size can be changed based on the T-slot of work table.

★ Air purge function is provided inside the motor cover as standard.

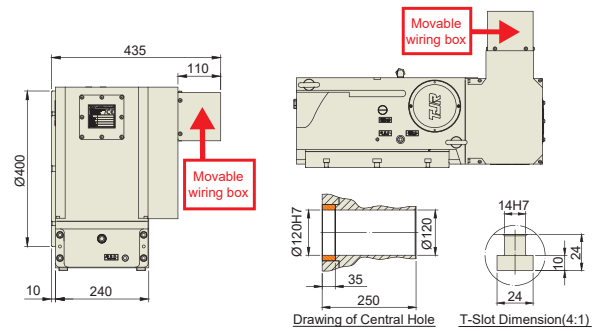
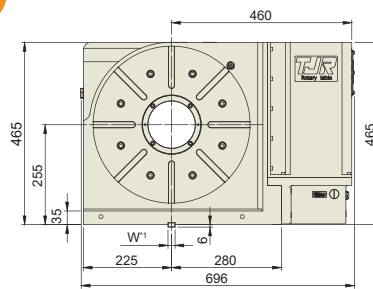
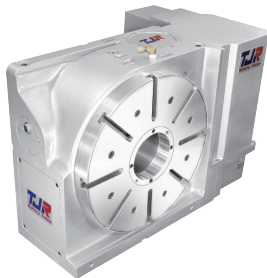
★ External dimensions depend on the type of the servo motor. Indicated dimensions are in case of FANUC. Please contact us for CAD files.

# Ø400mm Model Dimensions

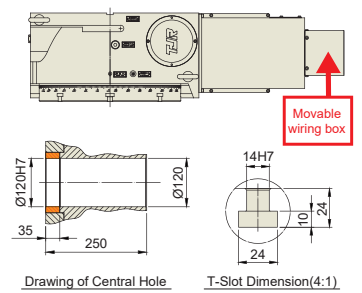
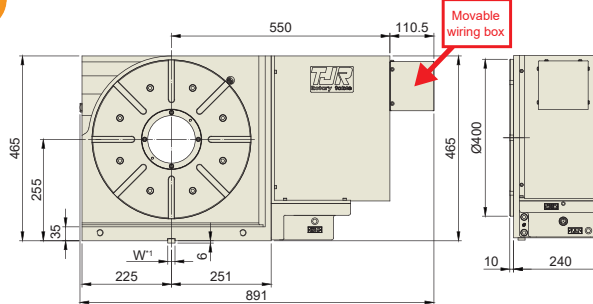
RC-400



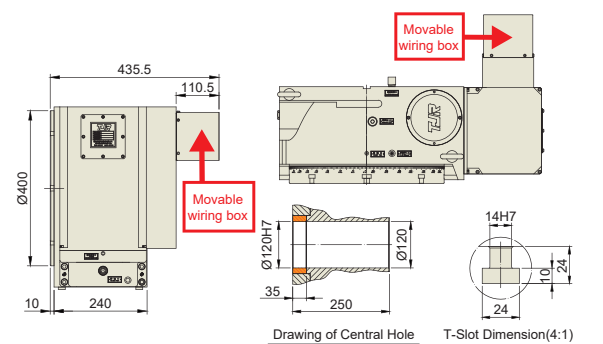
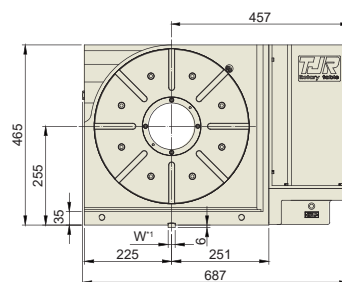
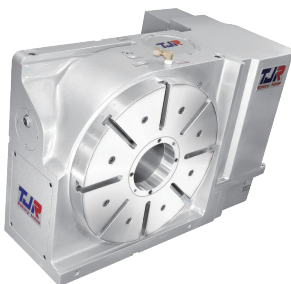
RC-400



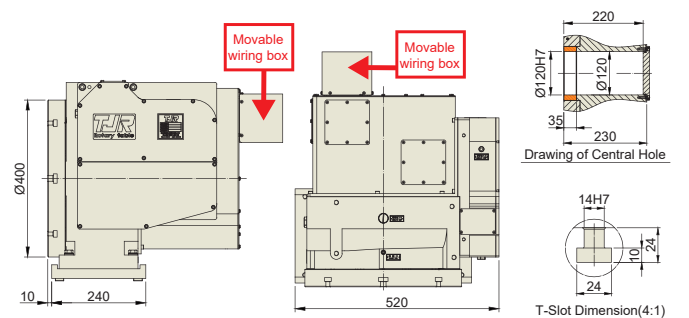
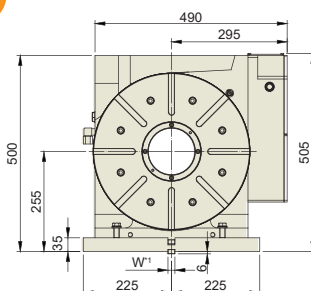
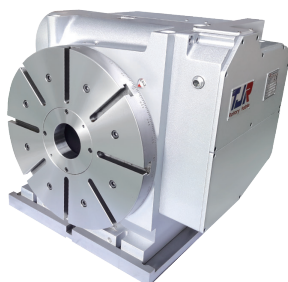
HR-400



HR-400



HR-400



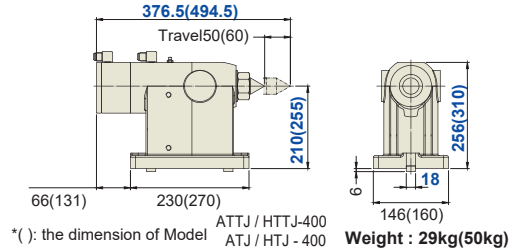
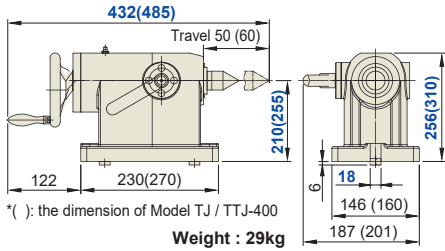
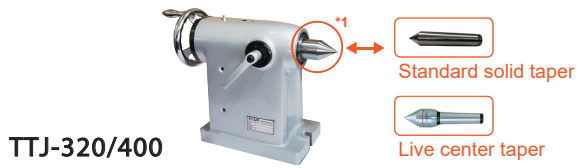
\*1: The Guide Key size can be changed based on the T-slot of work table.

★ Air purge function is provided inside the motor cover as standard.

★ External dimensions depend on the type of the servo motor. Indicated dimensions are in case of FANUC. Please contact us for CAD files.

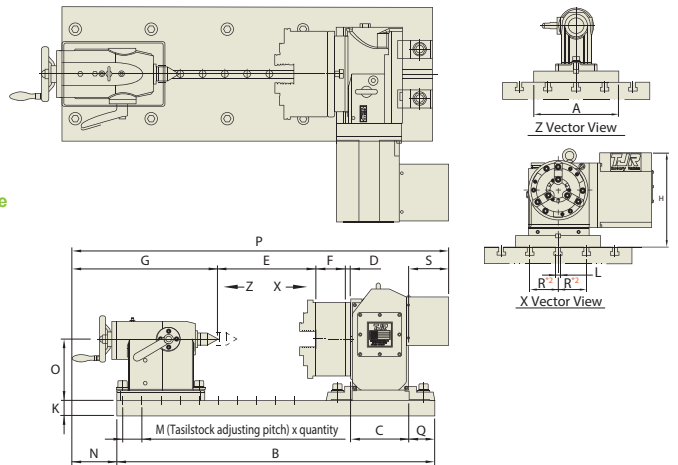
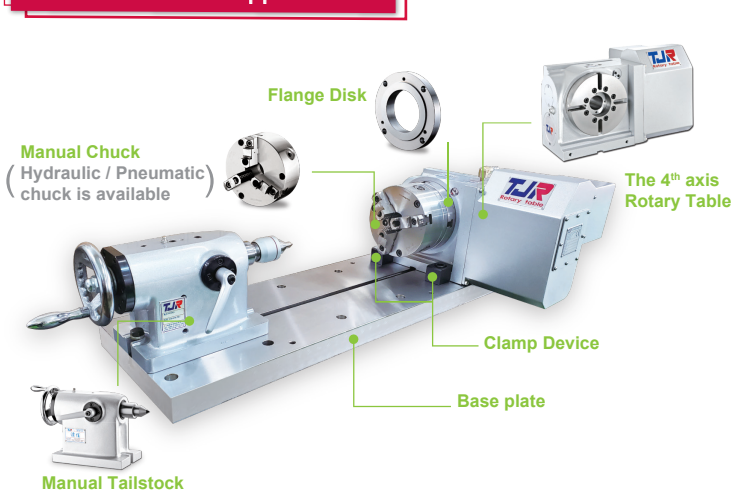


# Manual Tailstock & Corresponding Accessories



\*1: The taper is replaceable. The standard one is a solid taper. Moreover, the live center taper can be optional.

## Chuck and Tailstock Application



Rotary Table Model	Tailstock Model	Chuck Model	A	B	C	D	E	F	G	K	N	O	P	Q	S
HR-320 RC-320	TTJ-320	SK-9	400	1297	235	25	623.5	84	382.5	40	122	210	1556	69	206
		SK-10	400	1297	235	25	620.5	87	382.5	40	122	210	1321	69	206
HR-400 RC-400	TTJ-400	SK-12	450	1455	250	25	711.5	96	436.5	40	133	255	1707	69	188
		SK-16	450	1455	250	28	682.5	122	436.5	40	133	255	1457	69	188

\*2: "R" depends on the size of machine worktable.

★A suitable raiser for either rotary table or manual tailstock can be customized to increase the center height.



▲ HR-320 + TTJ-320



▲ HR-320 + TTJ-320



▲ HR-400 + TTJ-400